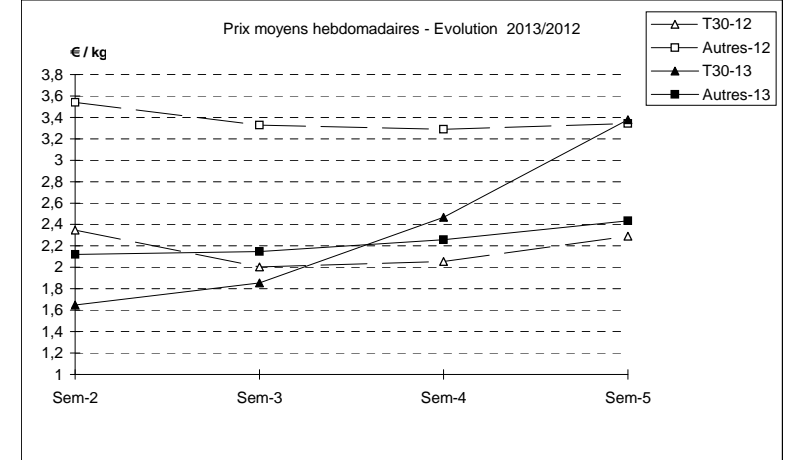
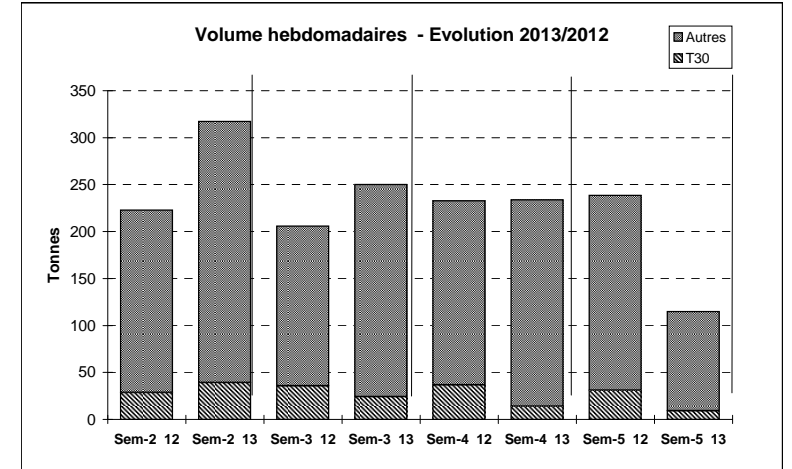


Suivi hebdomadaire des ventes en criée

| JOUR | PRESENTATION | | BOULOGNE | CHERBOURG | GRANVILLE | LA ROCHELLE | LE CROISIC | LE GUILVINEC | LES SABLES | PORT EN BESS | ST BRIEUC | Toutes Criées |
|--|--------------|--------------|----------|-----------|-----------|-------------|------------|--------------|------------|--------------|-----------|---------------|
| lun-28-janv 2013 | T30 | Ventes(kg) | | 165 | | 206 | | 75 | 1 187 | 5 | 183 | 2 757 |
| | | Valeur(€) | | 315 | | 599 | | 91 | 3 746 | 9 | 345 | 8 493 |
| | | P.M. (€/kg) | | 1,91 | | 2,90 | | 1,22 | 3,15 | 1,72 | 1,89 | 3,08 |
| | | Retrait(kg) | | | | | | | | | | |
| | Autre | Ventes | | 5 737 | 43 | 166 | | 4 486 | 3 136 | 1 896 | 17 756 | 37 302 |
| | | Valeur | | 12 693 | 57 | 575 | | 8 960 | 11 586 | 3 981 | 36 140 | 88 286 |
| | | P.M. | | 2,21 | 1,32 | 3,46 | | 2,00 | 3,69 | 2,10 | 2,04 | 2,37 |
| | | Retrait | | | | | | | | | | |
| mar-29-janv 2013 | T30 | Ventes | | 51 | | 649 | 69 | 38 | 168 | | 227 | 2 314 |
| | | Valeur | | 95 | | 1 780 | 63 | 57 | 708 | | 483 | 6 839 |
| | | P.M. | | 1,86 | | 2,74 | 0,92 | 1,52 | 4,22 | | 2,12 | 2,96 |
| | | Retrait | | | | | | | | | | |
| | Autre | Ventes | | 3 410 | | 828 | 27 | 3 982 | 273 | | 12 342 | 25 438 |
| | | Valeur | | 7 990 | | 2 230 | 53 | 8 053 | 1 081 | | 25 450 | 57 984 |
| | | P.M. | | 2,34 | | 2,69 | 1,96 | 2,02 | 3,96 | | 2,06 | 2,28 |
| | | Retrait | | | | | | | | | | |
| mer-30-janv 2013 | T30 | Ventes | | 13 | | | 36 | 6 | 12 | 1 | 159 | 1 038 |
| | | Valeur | | 26 | | | 33 | 8 | 58 | 1 | 368 | 4 069 |
| | | P.M. | | 1,97 | | | 0,92 | 1,30 | 4,76 | 1,15 | 2,31 | 3,92 |
| | | Retrait | | | | | | | | | | |
| | Autre | Ventes | | 437 | | | 107 | 269 | 387 | 412 | 11 461 | 18 742 |
| | | Valeur | | 1 145 | | | 213 | 546 | 1 328 | 979 | 23 642 | 44 095 |
| | | P.M. | | 2,62 | | | 1,99 | 2,03 | 3,43 | 2,38 | 2,06 | 2,35 |
| | | Retrait | | | | | | | | | 27 | 27 |
| jeu-31-janv 2013 | T30 | Ventes | | | 21 | | | 73 | 111 | | 48 | 892 |
| | | Valeur | | | 32 | | | 140 | 459 | | 113 | 2 882 |
| | | P.M. | | | 1,52 | | | 1,93 | 4,15 | | 2,35 | 3,23 |
| | | Retrait | | | | | | | | | | |
| | Autre | Ventes | | | | 10 | | 6 461 | 419 | | 4 061 | 13 512 |
| | | Valeur | | | | 124 | | 13 064 | 2 071 | | 8 638 | 35 513 |
| | | P.M. | | | | 12,94 | | 2,02 | 4,94 | | 2,13 | 2,63 |
| | | Retrait | | | | | | | | | | |
| ven-01-févr 2013 | T30 | Ventes | | 17 | | | 68 | 80 | 140 | | | 1 748 |
| | | Valeur | | 41 | | | 100 | 176 | 712 | | | 6 831 |
| | | P.M. | | 2,41 | | | 1,46 | 2,19 | 5,08 | | | 3,91 |
| | | Retrait | | | | | | | | | | |
| | Autre | Ventes | | 859 | | | 36 | 4 128 | 306 | 2 | | 10 159 |
| | | Valeur | | 2 844 | | | 124 | 8 361 | 1 474 | 4 | | 29 354 |
| | | P.M. | | 3,31 | | | 3,42 | 2,03 | 4,82 | 1,76 | | 2,89 |
| | | Retrait | | | | | | | | | | |
| Cumul semaine (samedi inclus) | T30 | Ventes(kg) | | 246 | 21 | 856 | 173 | 272 | 1 618 | 6 | 618 | 9 247 |
| | | Valeur (k€) | | 476 | 32 | 2 379 | 196 | 472 | 5 683 | 10 | 1 308 | 31 251 |
| | | P.M.(€/kg) | | 1,94 | 1,52 | 2,78 | 1,14 | 1,74 | 3,51 | 1,63 | 2,12 | 3,38 |
| | | Retrait (kg) | | | | | | | | | | |
| | Autre | Ventes(kg) | | 10 443 | 43 | 1 004 | 170 | 19 326 | 4 521 | 2 310 | 45 621 | 105 753 |
| | | Valeur(k€) | | 24 672 | 57 | 2 929 | 389 | 38 984 | 17 540 | 4 963 | 93 870 | 257 377 |
| | | P.M.(€/kg) | | 2,36 | 1,32 | 2,92 | 2,29 | 2,02 | 3,88 | 2,15 | 2,06 | 2,43 |
| | | Retrait (kg) | | | | | | | | | 27 | 27 |

Proportion T30/total de la semaine = 8%



| | Cumul campagne 13 | | Cumul campagne 12 | | Evolution | |
|-------------|-------------------|---------|-------------------|---------|-----------|-------|
| | T30 | Autre | T30 | Autre | T30 | Autre |
| Ventes (t) | 94,1 | 896,9 | 136,1 | 830,5 | -31% | 8% |
| Valeur (k€) | 194,8 | 2 003,6 | 294,4 | 2 824,6 | -34% | -29% |
| P.M. (€/kg) | 2,07 | 2,23 | 2,16 | 3,40 | -4% | -34% |
| Retrait (t) | 4,6 | 0,3 | 8,7 | 0,1 | -47% | 95% |

du 31/12 au 02/02/2013 du 02/01 au 04/02/2012