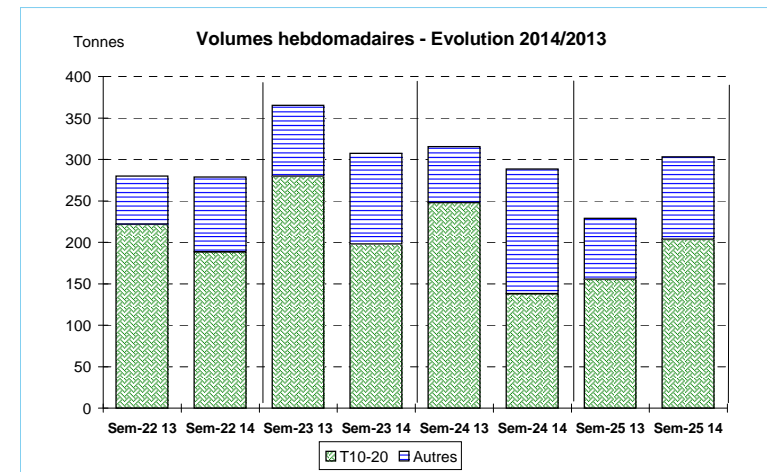
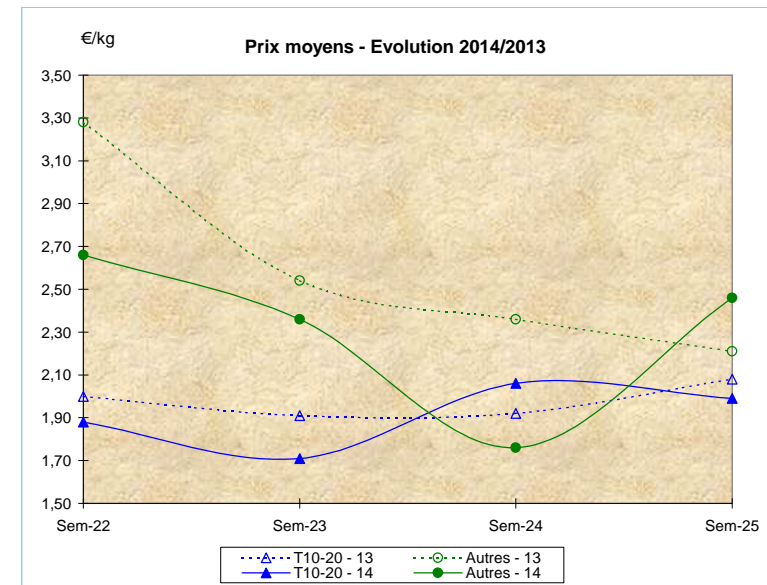


| JOUR | PRESENTATION | | LE GUILVINEC | CONCARNEAU | LORIENT | LA TURBALLE | ILE D YEU | SAINT GILLES | LES SABLES | LA ROCHELLE | ST JEAN DE LUZ | Toutes Criées | |
|---|--------------|-------------|--------------|------------|---------|-------------|-----------|--------------|------------|-------------|----------------|---------------|--------|
| lun-16-juin | T10-20* | Ventes(kg) | 4 357 | 6 160 | 51 775 | 104 | 35 | 64 | 535 | 2 712 | 1 709 | 69 375 | |
| | | Valeur(€) | 10 872 | 8 718 | 85 551 | 476 | 99 | 421 | 2 404 | 7 311 | 8 870 | 129 984 | |
| | | P.M. (€/kg) | 2,50 | 1,42 | 1,65 | 4,58 | 2,86 | 6,61 | 4,50 | 2,70 | 5,19 | 1,87 | |
| | | Stockage | | 32 | | | | | | | | | 32 |
| | Autres | Ventes | 1 245 | 561 | 2 317 | 1 031 | | | 163 | 2 250 | 1 115 | 1 839 | 17 050 |
| | | Valeur | 1 751 | 742 | 3 541 | 2 635 | | | 396 | 4 575 | 1 730 | 7 746 | 49 791 |
| | | P.M. | 1,41 | 1,32 | 1,53 | 2,55 | | | 2,43 | 2,03 | 1,55 | 4,21 | 2,92 |
| | | Stockage | | | | | | | | | | | |
| mar-17-juin | T10-20* | Ventes | 2 873 | 1 133 | 29 949 | 3 | 201 | 15 | 3 801 | 1 | 561 | 42 939 | |
| | | Valeur | 6 233 | 1 965 | 45 964 | 18 | 751 | 101 | 11 281 | 8 | 2 765 | 81 152 | |
| | | P.M. | 2,17 | 1,73 | 1,53 | 6,82 | 3,73 | 6,96 | 2,97 | 6,02 | 4,93 | 1,89 | |
| | | Stockage | | | | | | | | | | | 2 |
| | Autres | Ventes | 637 | 1 069 | 1 834 | 371 | 27 | 55 | 1 083 | 326 | 449 | 15 115 | |
| | | Valeur | 757 | 1 328 | 3 811 | 1 172 | 103 | 158 | 2 422 | 634 | 2 031 | 45 024 | |
| | | P.M. | 1,19 | 1,24 | 2,08 | 3,16 | 3,83 | 2,86 | 2,24 | 1,95 | 4,53 | 2,98 | |
| | | Stockage | | | | | | | | | | | |
| mer-18-juin | T10-20* | Ventes | 1 445 | 169 | 4 505 | 33 | | 28 | 64 | | 829 | 11 865 | |
| | | Valeur | 3 555 | 584 | 9 533 | 124 | | 181 | 369 | | 4 581 | 26 511 | |
| | | P.M. | 2,46 | 3,47 | 2,12 | 3,81 | | 6,50 | 5,81 | | 5,52 | 2,23 | |
| | | Stockage | | | | | | | | | | | 19 |
| | Autres | Ventes | 592 | 542 | 1 403 | 945 | | 41 | 1 145 | 214 | 854 | 24 055 | |
| | | Valeur | 746 | 682 | 2 358 | 2 055 | | 99 | 3 253 | 455 | 3 701 | 52 883 | |
| | | P.M. | 1,26 | 1,26 | 1,68 | 2,17 | | 2,44 | 2,84 | 2,12 | 4,33 | 2,20 | |
| | | Stockage | | | | | | | | | | | |
| jeu-19-juin | T10-20* | Ventes | 6 066 | 333 | 259 | 6 | | 34 | 4 164 | 145 | 868 | 17 470 | |
| | | Valeur | 12 011 | 941 | 1 094 | 12 | | 244 | 14 370 | 704 | 5 124 | 46 484 | |
| | | P.M. | 1,98 | 2,83 | 4,22 | 2,10 | | 7,15 | 3,45 | 4,87 | 5,91 | 2,66 | |
| | | Stockage | | | | | | | | | | | 3 |
| | Autres | Ventes | 1 733 | 776 | 1 057 | 498 | | 41 | 1 300 | 353 | 699 | 16 416 | |
| | | Valeur | 1 958 | 840 | 2 061 | 1 240 | | 98 | 3 491 | 779 | 4 045 | 45 212 | |
| | | P.M. | 1,13 | 1,08 | 1,95 | 2,49 | | 2,38 | 2,68 | 2,21 | 5,78 | 2,75 | |
| | | Stockage | | | | | | | | | | | 2 |
| ven-20-juin | T10-20* | Ventes | 4 718 | 349 | 44 603 | | | 74 | 3 998 | 129 | 903 | 59 892 | |
| | | Valeur | 8 386 | 754 | 77 427 | | | 456 | 9 210 | 685 | 5 314 | 116 513 | |
| | | P.M. | 1,78 | 2,16 | 1,74 | | | 6,14 | 2,30 | 5,32 | 5,88 | 1,95 | |
| | | Stockage | | | | | | | | | | | |
| | Autres | Ventes | 1 298 | 796 | 5 407 | | 1 | 242 | 2 755 | 632 | 979 | 22 684 | |
| | | Valeur | 1 316 | 838 | 7 908 | | 3 | 408 | 4 779 | 1 624 | 4 723 | 46 865 | |
| | | P.M. | 1,01 | 1,05 | 1,46 | | 2,86 | 1,69 | 1,73 | 2,57 | 4,82 | 2,07 | |
| | | Stockage | | | | | | | | | | | |
| Cumul semaine | T10-20* | Ventes(kg) | 19 460 | 8 814 | 131 655 | 145 | 236 | 214 | 12 561 | 2 986 | 4 870 | 203 317 | |
| | | Valeur (k€) | 41 057 | 14 204 | 221 150 | 631 | 849 | 1 402 | 37 634 | 8 709 | 26 654 | 404 895 | |
| | | P.M.(€/kg) | 2,11 | 1,61 | 1,68 | 4,35 | 3,61 | 6,54 | 3,00 | 2,92 | 5,47 | 1,99 | |
| | | Stockage | | 32 | | | | | | | | | 56 |
| | Autres | Ventes(kg) | 5 505 | 4 514 | 13 908 | 2 845 | 28 | 542 | 8 532 | 2 639 | 4 820 | 99 590 | |
| | | Valeur(k€) | 6 527 | 5 216 | 21 915 | 7 101 | 106 | 1 160 | 18 519 | 5 222 | 22 246 | 245 013 | |
| | | P.M.(€/kg) | 1,19 | 1,16 | 1,58 | 2,50 | 3,79 | 2,14 | 2,17 | 1,98 | 4,62 | 2,46 | |
| | | Stockage | | | | | | | | | | | 2 |
| Proportion T10+20/total de la semaine = 67% | | | | | | | | | | | | | |

T10*=T10+T11+T12 T20*=T21+T22



Source : FranceAgriMer / RIC



Source : FranceAgriMer / RIC

| | Cumul campagne 2014 | | Cumul campagne 2013 | | Evolution | |
|-------------|---------------------|---------|---------------------|---------|-----------|--------|
| | T10-20 | Autres | T10-20 | Autres | T10-20 | Autres |
| Ventes (t) | 5 868,7 | 1 696,6 | 3 509,8 | 1 192,9 | 67% | 42% |
| Valeur (k€) | 12 812,9 | 5 240,2 | 8 227,3 | 4 276,1 | 56% | 23% |
| P.M. (€/kg) | 2,18 | 3,09 | 2,34 | 3,58 | -7% | -14% |
| Non vendu | 51,9 | 5,1 | 211,1 | 19,4 | -75% | -74% |

du 01/01/2014 au 21/06/2014 du 01/01/2013 au 22/06/2013