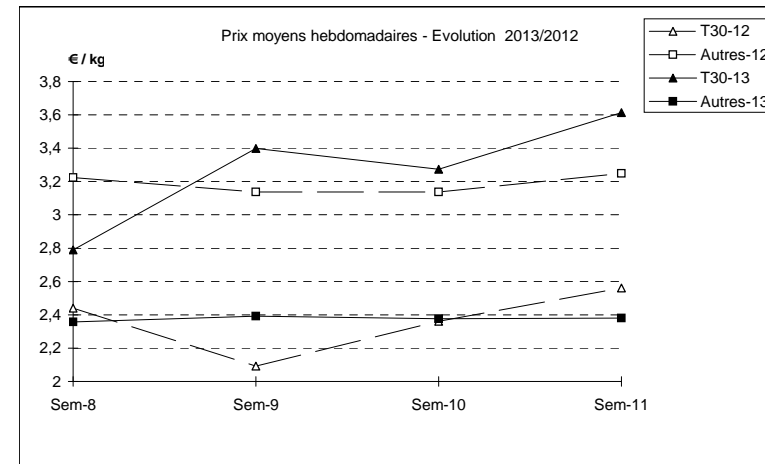
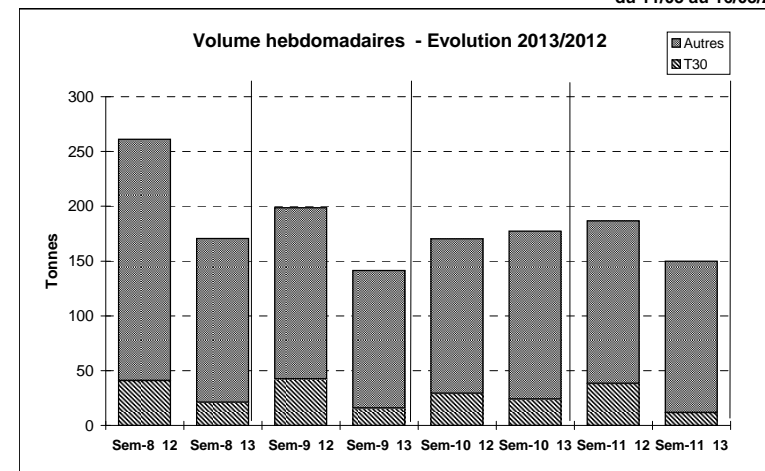


Suivi hebdomadaire des ventes en criée

| JOUR                                    | PRESENTATION |              | BOULOGNE | CHERBOURG | GRANVILLE | LA ROCHELLE | LE CROISIC | LE GUILVINEC | LES SABLES | PORT EN BESS | ST BRIEUC | Toutes Criées |
|---|--------------|--------------|----------|-----------|-----------|-------------|------------|--------------|------------|--------------|-----------|---------------|
| lun-11-mars<br>2013                     | T30          | Ventes(kg)   |          | 33        |           | 539         |            | 283          | 509        | 14           | 122       | 2 808         |
|   |              | Valeur(€)    |          | 71        |           | 1 925       |            | 464          | 1 920      | 26           | 285       | 9 501         |
|   |              | P.M. (€/kg)  |          | 2,15      |           | 3,57        |            | 1,64         | 3,77       | 1,86         | 2,33      | 3,38          |
|   |              | Retrait(kg)  |          |           |           |             |            |              |            |              |           |               |
|   | Autre        | Ventes       |          | 4 072     | 8         | 1 266       |            | 10 156       | 1 455      | 7 504        | 7 582     | 41 709        |
|   |              | Valeur       |          | 8 820     | 14        | 4 471       |            | 19 344       | 5 173      | 15 326       | 16 122    | 95 247        |
|   |              | P.M.         |          | 2,17      | 1,69      | 3,53        |            | 1,90         | 3,55       | 2,04         | 2,13      | 2,28          |
|   |              | Retrait      |          |           |           |             |            |              |            |              | 48        | 48            |
| mar-12-mars<br>2013                     | T30          | Ventes       |          | 43        |           |             |            | 222          | 84         |              | 95        | 1 615         |
|   |              | Valeur       |          | 18        |           |             |            | 368          | 399        |              | 149       | 6 019         |
|   |              | P.M.         |          | 0,41      |           |             |            | 1,66         | 4,75       |              | 1,57      | 3,73          |
|   |              | Retrait      |          |           |           |             |            |              |            |              |           |               |
|   | Autre        | Ventes       | 60       | 1 045     |           | 14          |            | 13 386       | 177        |              | 3 408     | 23 575        |
|   |              | Valeur       | 191      | 1 513     |           | 42          |            | 27 125       | 986        |              | 6 832     | 53 187        |
|   |              | P.M.         | 3,19     | 1,45      |           | 3,01        |            | 2,03         | 5,57       |              | 2,00      | 2,26          |
|   |              | Retrait      |          |           |           |             |            |              |            |              |           |               |
| mer-13-mars<br>2013                     | T30          | Ventes       |          |           |           | 173         |            | 295          | 551        |              | 69        | 1 571         |
|   |              | Valeur       |          |           |           | 742         |            | 592          | 2 402      |              | 141       | 5 772         |
|   |              | P.M.         |          |           |           | 4,30        |            | 2,00         | 4,36       |              | 2,05      | 3,67          |
|   |              | Retrait      |          |           |           |             |            |              |            |              |           |               |
|   | Autre        | Ventes       |          |           |           | 145         |            | 10 046       | 871        |              | 4 075     | 23 973        |
|   |              | Valeur       |          |           |           | 527         |            | 20 134       | 3 745      |              | 8 439     | 55 524        |
|   |              | P.M.         |          |           |           | 3,64        |            | 2,00         | 4,30       |              | 2,07      | 2,32          |
|   |              | Retrait      |          |           |           |             |            |              |            |              |           |               |
| jeu-14-mars<br>2013                     | T30          | Ventes       |          | 74        |           | 85          | 39         | 133          | 60         |              | 10        | 668           |
|   |              | Valeur       |          | 88        |           | 361         | 95         | 327          | 250        |              | 21        | 2 599         |
|   |              | P.M.         |          | 1,19      |           | 4,23        | 2,44       | 2,45         | 4,20       |              | 2,13      | 3,89          |
|   |              | Retrait      |          |           |           |             |            |              |            |              |           |               |
|   | Autre        | Ventes       | 3 096    |           |           | 200         |            | 3 915        | 272        |              | 1 381     | 11 418        |
|   |              | Valeur       | 6 590    |           |           | 731         |            | 7 874        | 1 191      |              | 3 267     | 30 131        |
|   |              | P.M.         | 2,13     |           |           | 3,66        |            | 2,01         | 4,38       |              | 2,37      | 2,64          |
|   |              | Retrait      |          |           |           |             |            |              |            |              |           |               |
| ven-15-mars<br>2013                     | T30          | Ventes       |          |           |           | 232         |            | 590          | 752        |              |           | 2 787         |
|   |              | Valeur       |          |           |           | 1 020       |            | 891          | 3 165      |              |           | 10 513        |
|   |              | P.M.         |          |           |           | 4,39        |            | 1,51         | 4,21       |              |           | 3,77          |
|   |              | Retrait      |          |           |           |             |            | 96           |            |              |           | 96            |
|   | Autre        | Ventes       | 64       |           | 2         | 906         |            | 18 194       | 1 559      | 7            | 2 840     | 33 248        |
|   |              | Valeur       | 237      |           | 4         | 3 514       |            | 36 663       | 6 309      | 14           | 6 314     | 82 506        |
|   |              | P.M.         | 3,70     |           | 1,96      | 3,88        |            | 2,02         | 4,05       | 1,96         | 2,22      | 2,48          |
|   |              | Retrait      |          |           |           |             |            | 180          |            |              |           | 180           |
| Cumul<br>semaine<br>(samedi<br>inclus)  | T30          | Ventes(kg)   |          | 150       |           | 1 029       | 209        | 1 525        | 1 955      | 14           | 296       | 11 793        |
|   |              | Valeur (k€)  |          | 177       |           | 4 048       | 518        | 2 642        | 8 135      | 26           | 597       | 42 606        |
|   |              | P.M.(€/kg)   |          | 1,18      |           | 3,93        | 2,48       | 1,73         | 4,16       | 1,86         | 2,02      | 3,61          |
|   |              | Retrait (kg) |          |           |           |             |            | 96           |            |              |           | 96            |
|   | Autre        | Ventes(kg)   | 124      | 8 213     | 10        | 2 530       | 955        | 55 698       | 4 334      | 7 511        | 19 285    | 137 986       |
|   |              | Valeur(k€)   | 428      | 16 923    | 17        | 9 285       | 2 003      | 111 141      | 17 405     | 15 340       | 40 974    | 328 449       |
|   |              | P.M.(€/kg)   | 3,45     | 2,06      | 1,74      | 3,67        | 2,10       | 2,00         | 4,02       | 2,04         | 2,12      | 2,38          |
|   |              | Retrait (kg) |          |           |           |             |            | 180          |            |              | 48        | 228           |
| Proportion T30/total de la semaine = 8% |              |              |          |           |           |             |            |              |            |              |           |               |



|             | Cumul campagne 13 |         | Cumul campagne 12 |         | Evolution |       |
|-------------|-------------------|---------|-------------------|---------|-----------|-------|
|             | T30               | Autre   | T30               | Autre   | T30       | Autre |
| Ventes (t)  | 195,3             | 1 679,4 | 354,8             | 1 856,0 | -45%      | -10%  |
| Valeur (k€) | 529,8             | 3 921,2 | 807,0             | 6 161,3 | -34%      | -36%  |
| P.M. (€/kg) | 2,71              | 2,33    | 2,27              | 3,32    | 19%       | -30%  |
| Retrait (t) | 5,0               | 0,7     | 15,1              | 0,2     | -67%      | 194%  |

du 31/12 au 16/03/2013

du 02/01 au 17/03/2012